



# IPAC

## Linking the International Programme for Action on Climate (IPAC) initiative on climate change indicators to the Global Set

---

Mauro Migotto, OECD

UNSD Expert Group on Environment Statistics, 14 October 2021

## Launched at the OECD Ministerial Council Meeting in May 2021

### Objective

- Support countries' efforts to progress towards net-zero GHG emissions and a more resilient economy by mid-century
- Help countries strengthen and coordinate their climate action through regular monitoring, policy evaluation and feedback on results and good practices
- Complement the UNFCCC and Paris Agreement. And so also complementary to the Global Set: IPAC more on international benchmarking and policy advice, Global Set designed to support countries in preparing their own sets according to their individual concerns, priorities and resources

### Two-year pilot implementation under a broader Horizontal Project on Building Climate and Economic Resilience

Open to OECD members and selected non-Members



# IPAC components



## Annual CLIMATE ACTION MONITOR



- Progress towards
  - ✓ National and Regional climate policy goals
  - ✓ NDCs
  - ✓ NAPs
  - ✓ LTS

## COUNTRY NOTES



- Environmental Performance Reviews
- Policy advice
- Examples of good practices
- Economic surveys
- In-depth energy reviews

## DASHBOARD of climate-related indicators



online interactive platform for **DIALOGUE & MUTUAL LEARNING** across countries



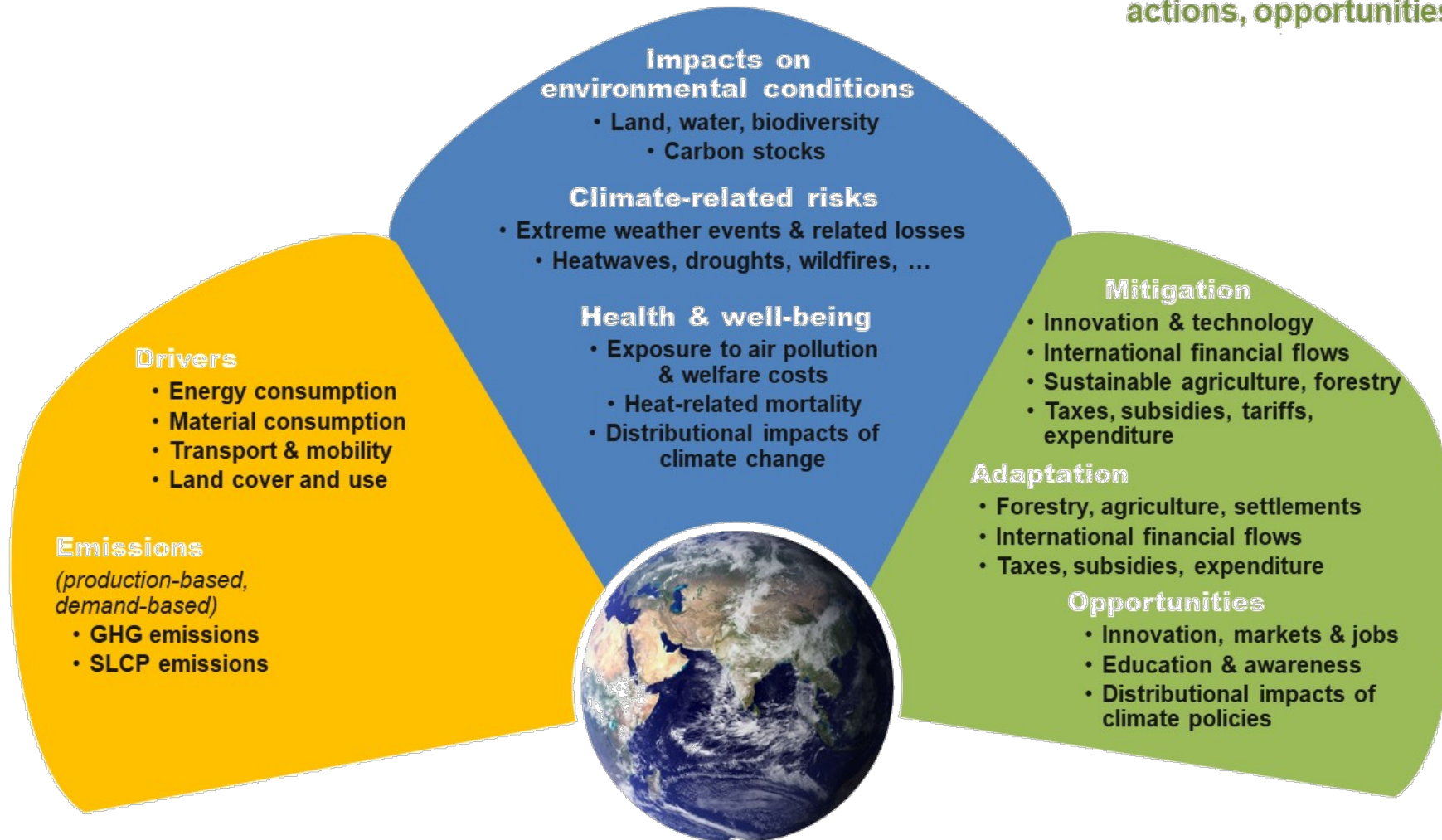
# Conceptual measurement framework



**Pressure**  
Drivers & emissions

**State**  
Impacts & risks

**Response**  
Policy responses,  
actions, opportunities



Coherent with UN frameworks for

- Climate change related statistics and indicators (UNECE)
- Global Set of Climate Change Statistics and Indicators (UNSD)

Note: selected examples



# Preliminary IPAC Dashboard



TYPE	INDICATOR	SUB-INDICATORS	LINK TO UN GLOBAL SET
Pressure	(1) GHG emission trends and intensities, and distance to targets	<b>1) Total GHG emissions;</b> % change and distance to NDC targets <b>2) GHG emissions by sector;</b> distance to targets if in NDC <b>3) CO<sub>2</sub> emissions from fuel combustion:</b> production-based; demand-based <b>4) GHG emission per unit of GDP and per capita;</b> level and % change	Total GHG emissions covered, but not the other indicators (GHG by sector, fuel combustion, and GHG intensities)
	(2) Net-zero emission trajectories		Not in the global set
State	(3) Climate-related impacts	5) Mean temperature anomaly	Covered in the global set
		6) % of land area suffering from unusually wet or dry conditions	Covered in the global set
		7) Change in country's mean sea level	Covered in the global set but unclear if at country level
	(4) Extreme weather events	8) Number of annual events or number of days per year	Covered in the global set
		9) Number of deaths and missing persons per 100,000 population	
(5) Climate-related vulnerabilities and impacts on well-being	10) Direct economic loss	PLACEHOLDER	Covered in the global set (large array of socio-economic indicators)



# Preliminary IPAC Dashboard



TYPE	INDICATOR	SUB-INDICATORS	LINK TO UN GLOBAL SET
Response	(6) Energy mix	11) Energy mix in total energy supply	Covered in the global set, but not all energy sources
		12) Energy mix in electricity production (excluding electricity trade)	Not in the global set
		13) Distance to target (if in NDC; including biomass in renewables)	Not in the global set
	(7) Carbon pricing (ECR)	14) Share of CO <sub>2</sub> emissions priced, by price (0, 30, 60, and 120 EUR/tonne)	Not in the global set
	(8) Climate related taxation	15) Climate related tax revenue as % of total tax revenue	Partly covered in the global set
		16) Climate related tax revenue as % of GDP	Not in the global set
	(9) Innovation	17) RD&D expenditure in renewables and other low-carbon technologies as % of total public energy RD&D	Not in the global set
		18) Patent applications in climate mitigation technologies as % of total technologies by inventor's residence 19) Patent applications in climate mitigation technologies as % of total technologies by patent office	Covered in the global set
	(10) Climate policy index	PLACEHOLDER	Not in the global set
	<u>PLACEHOLDERS: Adaptation measures - Climate budgets, expenditure, finance - Labour market developments</u>		



## IPAC – The broader indicator set



- **Pressure:** emissions; energy consumption and use; material consumption and use; transport & mobility; land cover and use
- **State:** impacts on environmental conditions (e.g. temperature, moisture, biodiversity), climate-related risks and vulnerability (e.g. exposure to extreme events, casualties; economic losses etc); impacts on health and well-being (e.g. distributional impacts)
- **Responses (mitigation):** innovation and technology (R&D, patents, start-ups); sustainable agriculture and forestry (carbon sinks, afforestation, sustainable agriculture); international financial flows (ODA, export credits, other flows); taxes, subsidies, tariffs (including FFS and agricultural support); others (climate indices, trade); expenditure and financing (budget, expenditure, financial flows)
- **Responses (adaptation and opportunities):** international financial flows and expenditure; forestry and human settlements; other adaptation policies; socio-economic opportunities (jobs, education, inclusiveness, distribution)



## Coherence with UNSD Global Set



- High degree of overlap (e.g. drivers, physical impacts, hazards, mitigation measures)
- But global set is larger in scope:
  - Larger set of drivers (e.g. population growth, drained/degraded soils)
  - Larger set of impacts (e.g. crop losses, change in snow cover, water abstractions, distribution and status of species etc)
  - Vulnerability part, e.g. food security, vulnerable species, infrastructure
  - Adaptation, e.g. risk management & early warning systems
- Some indicators of the Global Set aren't directly related to climate change (e.g. waste collection) or may be difficult to measure (e.g. "climate-related diseases"). Thus more precise definitions may be needed and careful interpretation of non-climate-related indicators.
- Clear opportunities of cross-fertilisation in indicator development





**THANK YOU!**

---

**OECD work on climate**

<https://www.oecd.org/climate-change/>

**OECD international repository in support of climate action**

<https://www.oecd.org/environment/climate-data/>

**IPAC**

<https://www.oecd.org/climate-action/ipac/>

<https://www.oecd.org/action-climat/ipac/>

**HP on Climate and Economic resilience**

<https://www.oecd.org/env/cc/brochure-horizontal-project-on-climate-and-economic-resilience.pdf>